

MONTAGE
Health

2017
ANNUAL REPORT



Let's make Monterey the
healthiest county in the state.

TABLE OF CONTENTS

PAGE
04

We got this.

Let's make Monterey the healthiest county in the state. You do your part. We will promise to continue to do ours.

PAGE
32

Letter from Montage Health Chief Executive Officer

PAGE
34

Leadership

PAGE
36

Entities

- Montage Health
- Community Hospital of the Monterey Peninsula
- Montage Medical Group
- Montage Health Foundation
- Aspire Health Plan
- Community Health Innovations
- Montage Wellness Center

PAGE
56

Financials

PAGE
60

Community Benefit

PAGE
70

Your Gifts at Work



Fighting over the last bunch of kale.
Stepping away from the donut.
Getting more sleep.
Promising to listen more. Smiling first.

Yes, these are — indeed — different times.

You may have heard that Monterey County is working to become the healthiest county in California.

Big state? To be sure. Radical idea? **We think not.**

At Montage Health (think Community Hospital and its sister and brother companies), we're all about that healthy living thing.

We started in a former clinic in Carmel more than 80 years ago. Then a hospital in the Del Monte Forest. Private rooms before there were private rooms. Natural setting before feng shui was a thing. Four stories tall — and no taller — before intimate environments became the latest craze.

Why? Better healing and staying healthier, of course.

Now? Fast forward 80 years and we are Montage Health — a collection of entities, all started here in Monterey County. Locals helping locals with one of the things that matters most to everyone: health. But we aren't much for the typical go-see-the-doctor-when-you're-sick sort of thing. Our goal is to make everyone feel as good as they can.

Our greatest dream? To keep you *out* of the hospital.

So, we're questioning everything, and we're boldly innovating.



How so, you might wonder?

Well, we know you have to move to stay healthy. So, we built **Montage Wellness Center**, with locations in Marina and Salinas.

To reduce insurance costs, we created our own health plan — **Aspire Health Plan** — so you get personalized care and the healthcare dollars stay right here in Monterey County.

Finding a primary care doctor or a specialist can be challenging, so we formed **Montage Medical Group**. With seven local offices, we have already added more than 40 (yes, 40!) new doctors to the area.

And for those with healthcare conditions that require the most care, the most individual attention, we created a program with people who reach out directly to help them enter and navigate the healthcare system. **Community Health Innovations** — fondly known as CHI — is about ensuring the best health for everyone, regardless of where they begin on the path.



A photograph of a Zen garden featuring several smooth, dark grey stones arranged in a line on a bed of light-colored sand. Each stone is surrounded by concentric, hand-drawn ripples in the sand, creating a sense of calm and balance. The background is softly blurred, showing more stones and ripples receding into the distance.

Finally, we have **Montage Health Foundation** (MHF). You might have heard the latest news. MHF gratefully accepted a remarkable gift of **\$105.8 million** from longtime Community Hospital and Montage Health supporter Bertie Bialek Elliott, to be used exclusively for child and adolescent behavioral health. Our comprehensive program will be called **Ohana**, Hawaiian for family — in the broadest sense.

Because we're all in this together.

That is just the latest (and, to be sure, the largest,) example of people stepping up to give us the tools we need to make our community the healthiest it can be.

Our goal, you see, is to provide a different model for health, for life. The kind of life we all want.

But being who we are, even that made us curious. How are we doing with health? With life? In a study by the Robert Wood Johnson Foundation measuring a broad array of community health indicators, Monterey County was the 22nd healthiest county in California. Out of 58. Hmm. Middle of the pack. Not a place we *ever* like to be.



Bertie Bialek Elliott



So, in January,
we issued the challenge:
**Let's make Monterey
the healthiest county
in the state.**

You do your part.
We will promise to continue to do ours.

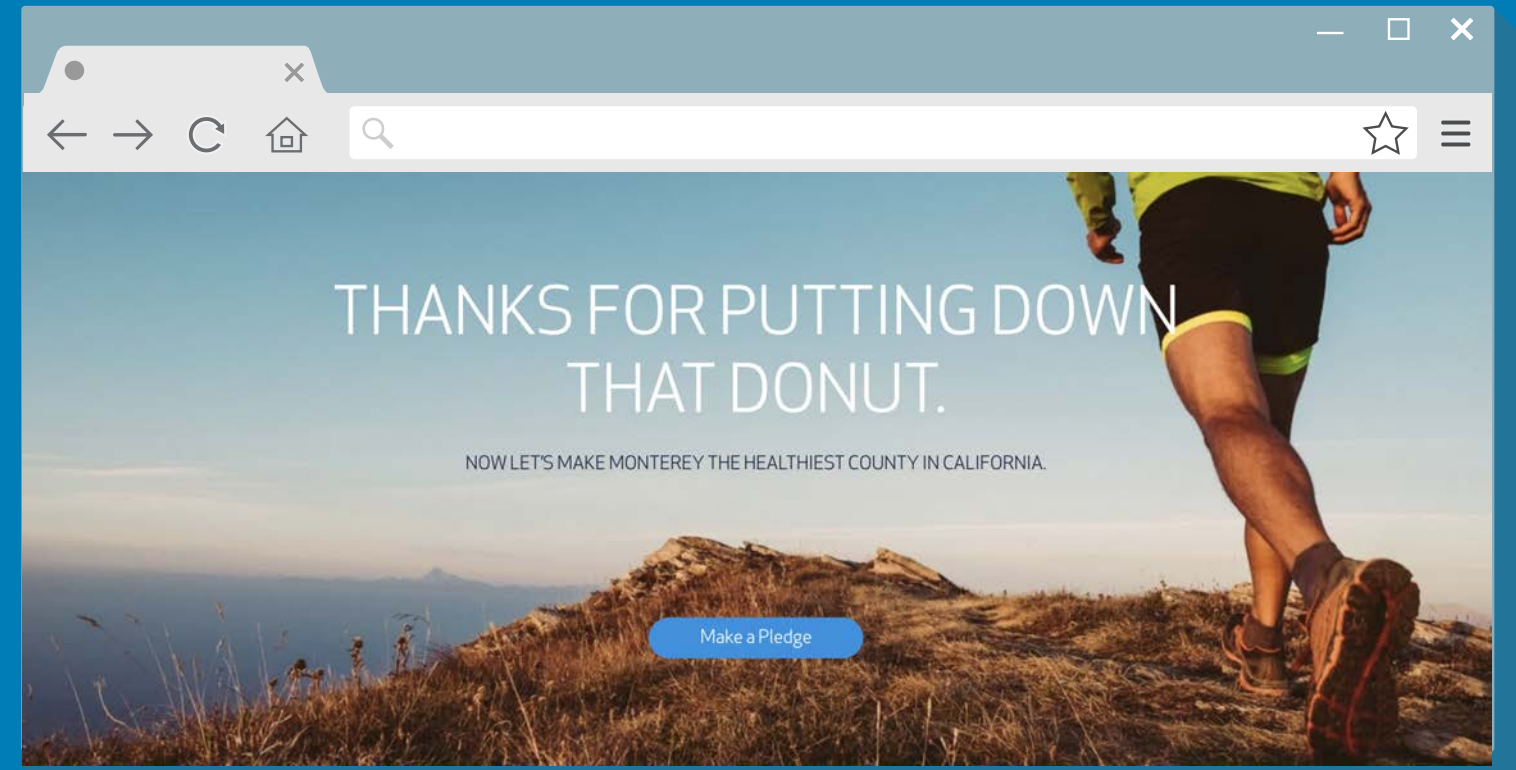


If you haven't seen or heard, we put the message on buses.
We ran a TV ad (twice) during the most-amazing Super Bowl EVER.
We were in the local newspapers. We posted on social media.

YOU IN THE HONDA,
PUT DOWN THE DONUT.



SAY IT
WITH US:
ARUGULA.



We even built a website — HealthierMontereyCounty.org.
We're serious.

So serious, in fact, we put together a list.

If we're working with the number 22 as a starting point — as in 22nd healthiest county in the state — game on...

Here are the **22 THINGS** we at Montage Health are doing to become the healthiest county in California...



1 Recruiting doctors and specialists



Dr. Steven Goldberg

2 Opening primary and specialty care clinics



3 Launching a Mobile Health Clinic



4 Building wellness centers



5 Developing a preoperative clinic



6 Providing chronic disease management



7 Offering free and low-cost classes



9 Embarking on a diabetes initiative



8 Launching Ohana, a groundbreaking mental health program for children and teens

10 Hiring a pediatric wellness coach



Taylor Gann

11 Providing continuing education for doctors and staff



12 Giving everyone their health data right on their phones through Epic with MyChart



Aaron Groff

13 Earning advanced certification for stroke, inpatient diabetes, palliative care

14 Rolling out an advanced healthcare directive campaign



15 Meeting for daily safety huddles in the hospital to keep our patients safe



16

Creating a Medicare Advantage plan to simplify, coordinate care for seniors



Adrienne Shimoda, Aspire Health Plan member

17

Developing NICHE to better care for seniors in the hospital



18

Supporting and partnering with community organizations that support health and wellness



Kristi Marotta

19

Offering scholarships for people interested in health careers

20

Providing sponsored care for those without resources



21

Initiating Prescribe Safe to cut opioid use



22

Developing HeartSafe to train and equip the community to react to heart attacks

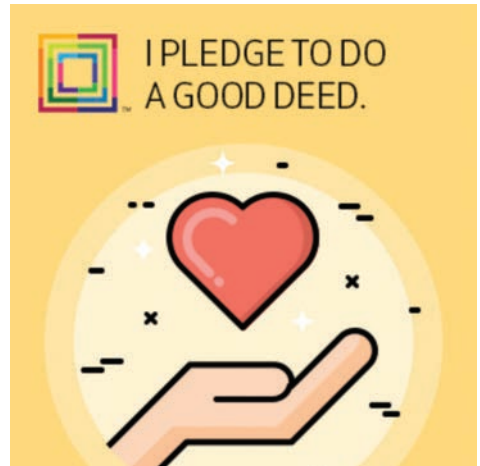
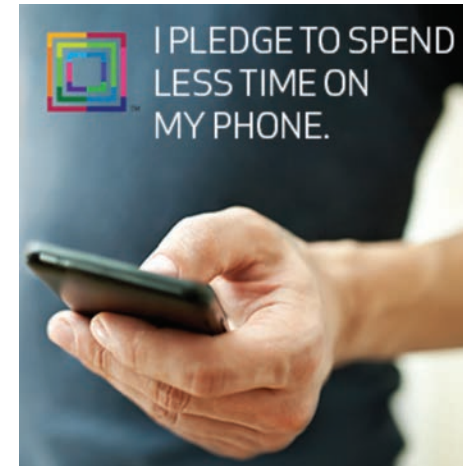




Now it's your turn.
Not "tag, you're it," but rather,
"LET'S DO THIS....Together."

There are plenty of ways to join the cause. Simple things. Big results. Imagine if we make it to the top together.

Some ideas to help you get started...



More about the 22 ways we're getting healthier . . .

1

RECRUITING DOCTORS AND SPECIALISTS

Montage Medical Group has more than 40 primary care doctors and specialists providing care at offices in Monterey, Carmel, and Marina. Physician recruitment continues to ensure healthcare access for the community. To help in those recruitment efforts, Montage Health purchased an apartment complex in Monterey to provide transitional housing.

2

OPENING PRIMARY AND SPECIALTY CARE CLINICS

Montage Medical Group now has primary care offices in Monterey, Carmel, and Marina. The newest and largest building — at Ryan Ranch in Monterey — opened in spring 2018.

3

LAUNCHING A MOBILE HEALTH CLINIC

The clinic provides free, basic healthcare services to Monterey County's homeless and others who have limited access to care.

4

BUILDING WELLNESS CENTERS

Montage Wellness Center has locations in Marina and Salinas. Both centers feature lap pools, cardio and weight machines, classes, and personal training.

5

DEVELOPING A PREOPERATIVE CLINIC

Before surgery, a clinician goes through the patient's health history in detail to ensure they are as prepared as possible and can have the best results.

6

PROVIDING CHRONIC DISEASE MANAGEMENT

Community Health Innovations (CHI) provides tools, knowledge, and coordinated support for our patients with chronic diseases. CHI is dedicated to helping create a vibrant, engaged, and healthy population.

7

OFFERING FREE AND LOW-COST CLASSES

Montage Health offers courses on everything from nutrition to childbirth to exercise to disease management.

8

LAUNCHING OHANA, GROUNDBREAKING MENTAL HEALTH INITIATIVE FOR CHILDREN AND TEENS

Thanks to a \$105.8-million gift from Carmel's Bertie Bialek Elliott at the end of 2017, Montage Health is building an innovative, transformational mental health program for children and adolescents.

9

EMBARKING ON A DIABETES INITIATIVE

Montage Health has partnered with Salinas Valley Memorial Healthcare System to increase awareness and identification of pre-diabetes and diabetes throughout Monterey County, and to provide education and prevention services.

10

HIRING A PEDIATRIC WELLNESS COACH

Our coach provides bilingual programs — English and Spanish — for children in the community to help them create healthy, lifelong habits.

11

PROVIDING CONTINUING EDUCATION FOR DOCTORS AND STAFF

To ensure our staff is credentialed, licensed, and current — and providing the highest-quality care to our patients — we support continuing education.

12

GIVING EVERYONE THEIR HEALTH DATA THROUGH EPIC ON MYCHART

Montage Health is implementing an electronic health record that will enable patients to have more seamless care and coordinated care, with much of their health information available in one secure place.

13

EARNING ADVANCED CERTIFICATION FOR STROKE, INPATIENT DIABETES, PALLIATIVE CARE

These three critical programs offer the highest-quality care.

14

ROLLING OUT AN ADVANCED DIRECTIVE EDUCATION CAMPAIGN

Planning for and talking about what we want when it comes to serious illness and end-of-life care is difficult, but vastly important. We offer free workshops and guidance on how to navigate these challenging times early.

15

MEETING FOR DAILY SAFETY HUDDLES AT COMMUNITY HOSPITAL TO KEEP OUR PATIENTS SAFE

Staff convenes every morning to discuss the previous day's events, upcoming considerations, and to develop a Safety Tip of the Day.

16

OFFERING A MEDICARE ADVANTAGE PLAN TO SIMPLIFY AND COORDINATE CARE FOR SENIORS

Aspire Health Plan offers three different Medicare Advantage plans, featuring cost savings for every budget, a large local provider network, and urgent and emergent care outside Monterey County.

17

DEVELOPING NICHE TO BETTER CARE FOR SENIORS IN THE HOSPITAL

Many of our patients at Community Hospital are 65 years of age or older. Nurses Improving Care for Healthcare System Elders (NICHE) ensures our staff is knowledgeable about geriatric concerns, enabling us to provide evidence-based care for common conditions in this population.

18

SUPPORTING AND PARTNERING WITH COMMUNITY ORGANIZATIONS THAT SUPPORT HEALTH AND WELLNESS

Through our Community Benefit program, we collaborate with numerous community partners including the Big Sur International Marathon, Boys & Girls Clubs of Monterey County, Community Partnership for Youth, area schools, etc.

19

OFFERING SCHOLARSHIPS FOR PEOPLE INTERESTED IN HEALTH CAREERS

Community Hospital's Auxiliary awards scholarships annually. Many of the student recipients volunteer at the hospital while attending Monterey Peninsula College's Maurine Church Coburn School of Nursing, California State University Monterey Bay, and other institutions.

20

PROVIDING SPONSORED CARE FOR THOSE WITHOUT RESOURCES

At Community Hospital, we are committed to caring for all who come through our doors, regardless of ability to pay, to the fullest extent allowed by law and available resources. This program is designed for those who can't pay their hospital bill and who meet qualifying guidelines.

21

INITIATING PRESCRIBE SAFE

This program continues to expand and make significant progress in the fight against opioid abuse and misuse in Monterey County.

22

DEVELOPING HEARTSAFE TO TRAIN AND EQUIP THE COMMUNITY TO REACT TO HEART ATTACKS

Community Hospital's Tyler Heart Institute, in collaboration with the American Heart Association, offers a Monterey County-wide defibrillator program and CPR education. Nonprofit organizations and schools can apply for partial or complete grants.



Not to worry. **We got this.**

Likely, you've heard.

Maybe you saw the bus going by, urging folks to put down the donut. Or perhaps you caught our TV commercial during the last Super Bowl. If so, you know we're trying to make Monterey the healthiest county in California.

Sounds easy, right?

Beautiful weather. Invigorating scenery. Bike trails. Walking paths. Challenging — or not — hikes. Plenty of local produce.

Well, not so fast. It seems that Monterey County is just about average when it comes to the health status of our county. That doesn't sit particularly well with us at Montage Health. For the past 80-plus years, we've been dedicated to improving lives and helping create optimal health for everyone in our community. So, we like to be at the top of these kinds of lists.

We pride ourselves on hard work and commitment, which means we will be doing our part to help our entire county move toward the top of the list. Which also means joining you in this challenge.

So, let's get moving, eating better, paying it forward, reading, laughing, talking face-to-face, and sleeping more.

With all of us working together, you know we got this.

Best regards,



Steven Packer, MD
President and CEO



2017 LEADERSHIP

Montage Health

Community Hospital of the Monterey Peninsula

BOARD OF TRUSTEES

Kathleen Bang
Jane Durant-Jones,
Auxiliary President
John Ellison, MD
Gene Hill
William W. Lewis
Michael D. Lyon
John Mahoney, Chair
Stan McKee
John O'Brien
Frederick O'Such
Steven Packer, MD, Montage Health
President/CEO
Jane Panattoni, Secretary
Stephen Schulte
Greg Spowart, MD
Bill Warner
Patrick Welton, MD, Vice Chair
Phil Wilhelm
William Young

Aspire Health Plan BOARD OF DIRECTORS

Rebecca Abundis, DO
David Awerbuck, MD
Sameer Bakhda, MD
Pete Delgado, SVMHS President/CEO
Rafael Garcia
Gene Hill
Scott Kelly, VP/COO
John O'Brien
Joanna Oppenheim, MD
Steven Packer, MD, Montage Health
President/CEO
Allen Radner, MD, SVMHS CMO
Harry Wardwell
Laura Zehm, AHP President/CEO

Community Health Innovations BOARD OF MANAGERS

Michelle Averill
Sharon Crino
Pete Delgado, SVMHS President/CEO
Christine Haska
William W. Lewis, Chair
Elizabeth Lorenzi, VP/COO
Al Nicora
Chris Orman
Steven Packer, MD, Montage Health
President/CEO
Allen Radner, MD, SVMHS CMO
Victor Rey
Bill Warner
Laura Zehm, CFO

Montage Medical Group BOARD OF TRUSTEES

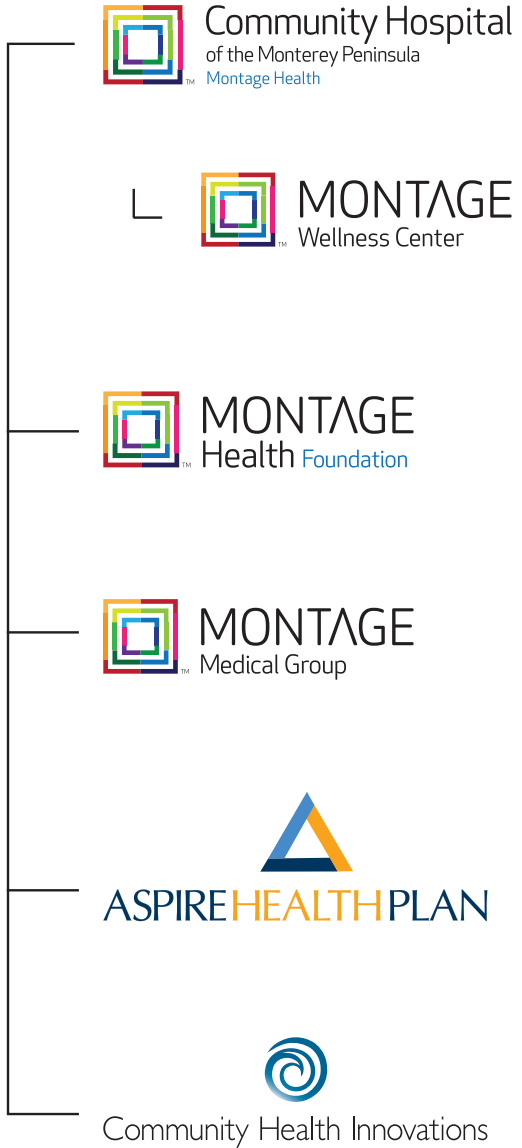
Lancelot Alexander, MD
Anthony Chavis, MD, COO
Guru Khalsa, MD
Michael Lyon, Vice Chair
John Mahoney
Stan McKee, Chair
Wayne Moon
Steven Packer, MD, Montage Health
President/CEO
David Straface, MD
Laura Zehm, CFO

Montage Health Foundation BOARD OF TRUSTEES

Theodore Balestreri, II	Sharon Meresman
David Benjamin, Vice Chair	Matt Morgan, Treasurer/CFO
Bertie Bialek Elliott	Mike Murphy
Randall Charles, Secretary	Steven Packer, MD, Montage Health President/CEO
George Couch, III	Stephen Schulte, Chair
Bill Doolittle	Leslie Snorf
Jane Durant-Jones, Auxiliary President	Joanne Storkan
Ryan Edwards	Clark Struve
Nicholas Fantl	Bill Tyler
Craig Geiler, MD	Patrick Welton, MD
Daniel Hightower, MD	Margi Wiest
Bob Kavner	Bill Young
Lynn Knoop	
Clay Larson	
Don Lucas	
John Mahoney	
Kevin Mahoney	



OUR ENTITIES



Montage Health, a nonprofit company, is a collection — a montage — of entities designed to keep people healthy and connected. Preventive, restorative, palliative, and coordinated care. Many parts operating with a single, shared vision — services that address the entire continuum of care.

montagehealth.org

Montage Health Vision Statement

Improving lives by
 delivering exceptional care
 and
 inspiring the pursuit of
 optimal health





- Bertie Bialek Elliott makes an unprecedented gift of \$105.8 million to Montage Health Foundation. The money will be used to build an innovative, transformational mental healthcare program for children and teens.
- Community Hospital has its busiest year ever, with record inpatient admissions and outpatient visits.
- Community Hospital earns an “A” for patient safety from the Leapfrog Group, an independent organization focused on improving healthcare.
- Westland House, Community Hospital’s skilled nursing facility, is awarded 5 stars for quality of care, the most possible, from the Centers for Medicare and Medicaid Services.

**Carol Hatton
Breast Care
Center celebrates
its 15th
anniversary.**

- Montage Health’s mobile clinic begins free basic healthcare service to Monterey County’s homeless and others who have limited access to care.
- Tyler Heart Institute celebrates its 10th anniversary.
- Prescribe Safe expands and continues to make progress against opioid abuse and misuse in Monterey County. Overdose deaths decline in Monterey County, law enforcement officers are equipped with Narcan to reverse overdoses, and drug take-back bins are placed at Community Hospital and in South County.

To help recruit more doctors and clinicians for hard-to-fill positions, Montage Health buys an apartment complex in Monterey to provide transitional housing.



- The Hospital Quality Institute spotlights **Community Hospital's lifesaving care of a 17-year-old who suffered a heart attack.**
- A ceremony marks the placement of the **final beam in Montage Medical Group's newest and biggest office** in Ryan Ranch. The building opens in early 2018.
- Community Hospital **employees score near the top of the charts in an employee engagement** survey, which measures commitment to the work we do.
- Montage Health buys land and **builds a new Seaside Family Health Center** to replace the small, outdated center operated by Monterey County's Health Department.
- Community Hospital is one of 21 hospitals in California named to the **"Most Wired" list by the American Hospital Association.**
- Kids Eat Right, a school-based nutrition education program, **receives congressional recognition from Rep. Jimmy Panetta.**



Community Hospital of the Monterey Peninsula

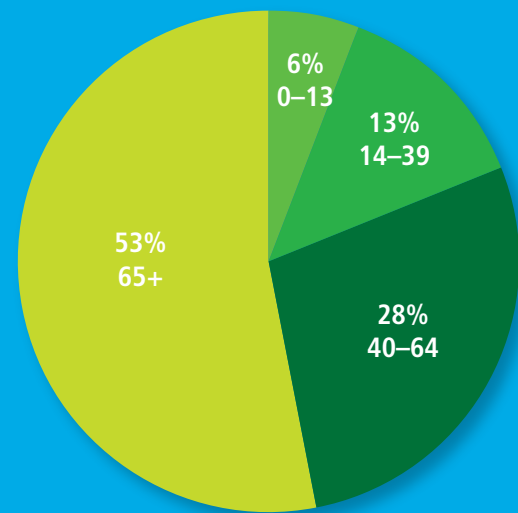
Montage Health

Since 1934, Community Hospital of the Monterey Peninsula has cared for people from birth to end-of-life and everything in between. Patients can expect the best care available, inside the hospital or at any of our outpatient settings.

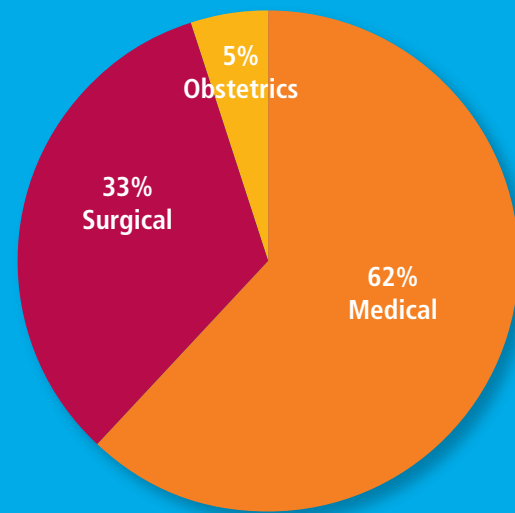
chomp.org



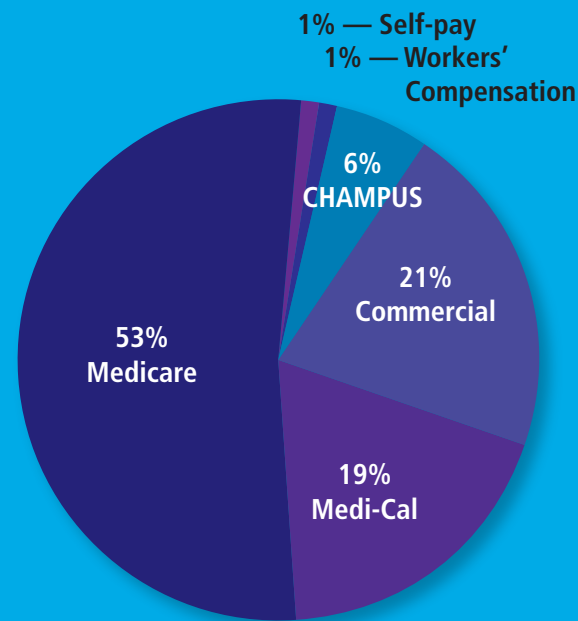
PATIENT PROFILE



Age



Service



Payment Source

Licensed Beds
COMMUNITY HOSPITAL 258
WESTLAND HOUSE 28

Admissions
COMMUNITY HOSPITAL 12,040
WESTLAND HOUSE 746

BIRTHS 1,167
EMERGENCY VISITS 55,631
OUTPATIENT VISITS 340,264

Surgeries
INPATIENT 3,951
OUTPATIENT 2,986

EMPLOYEES 2,318
MEDICAL STAFF 456

Volunteers
AUXILIARY ADULTS/COLLEGIATES 310
AUXILIARY JUNIORS 153
HOSPICE OF THE CENTRAL COAST 99
CHAPLAIN SERVICES, CLERGY 17
CHAPLAIN SERVICES, NON-CLERGY 19
THERAPY DOGS 32



By recruiting the best and most-needed doctors for our community, Montage Medical Group provides timely access to affordable and highly reliable care and caring.

montagemedicalgroup.org

SPECIALTIES

Cardiology	Neurology	Pulmonology
Clinical psychology	Obstetrics/gynecology	Sleep medicine
Endocrinology	Palliative care	Urology
Family medicine	Physical medicine and rehabilitation	
Infectious disease	Psychiatry	
Internal medicine		

NUMBER OF DOCTORS | 42

ADDITIONAL EMPLOYEES | 154

OFFICES | 7

PATIENT VISITS | 98,030

2017 HIGHLIGHTS

- Designed and built a new medical office building at Ryan Ranch, which opened in spring 2018
- On-boarded seven new doctors to the group, and recruited an additional 14 who will join in 2018



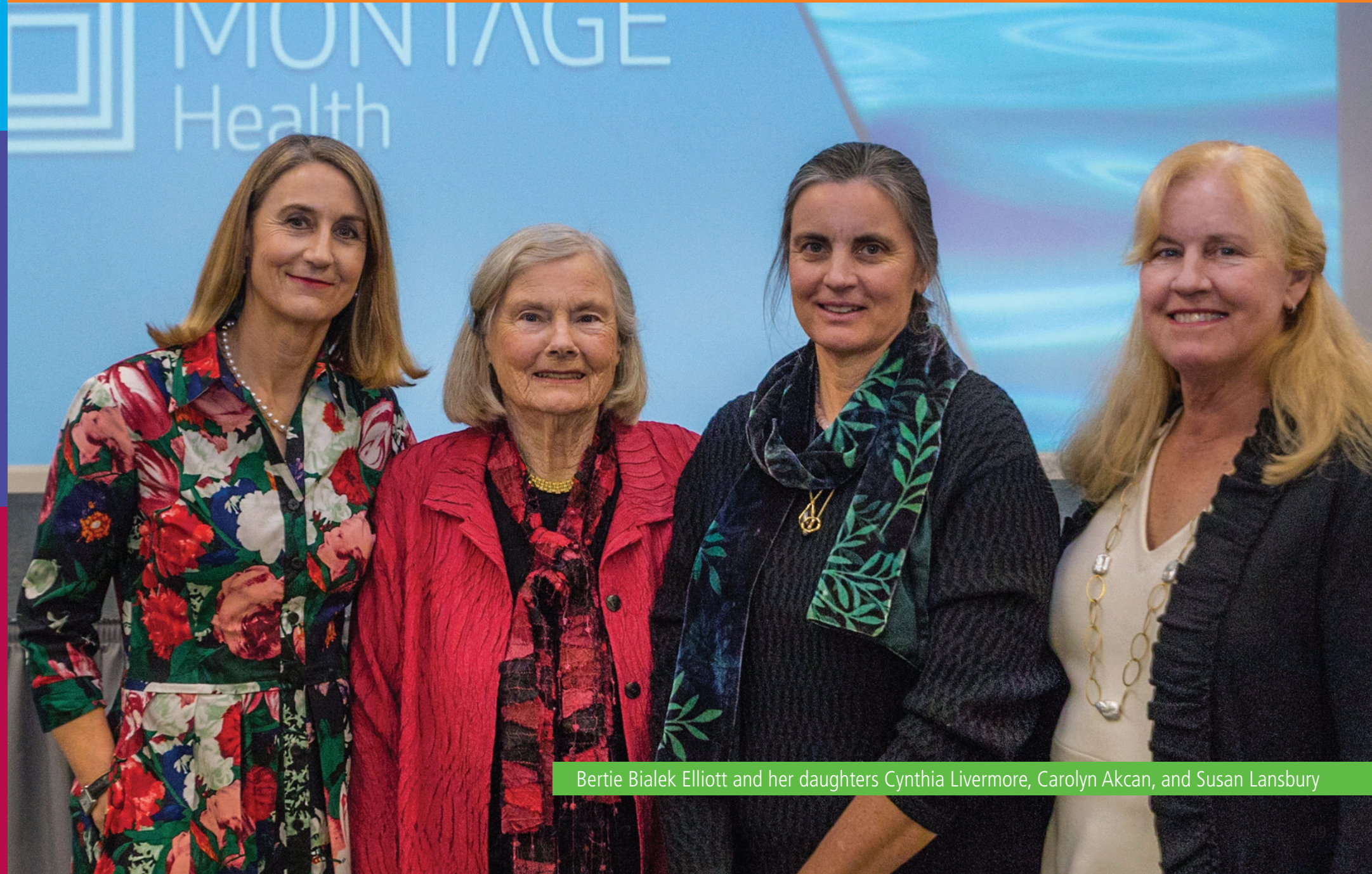


Montage Health Foundation, in its first year of operation and with its own board of trustees, raised \$116.3 million in 2017 — including the second-largest gift in support of healthcare in the United States. That gift came through the generosity of Bertie Bialek Elliott. Her \$105.8-million contribution will fund Ohana, a groundbreaking approach to mental healthcare for our community’s children. All of the funds raised by the foundation have a significant impact on local healthcare, through efforts such as the new mobile clinic to serve the homeless, training to expand treatment for traumatic brain injuries, and recruitment of new doctors to provide access to care for more people.

montagehealthfoundation.org

2017 HIGHLIGHT

Bertie Bialek Elliott makes a \$105.8-million gift to transform mental healthcare for kids in Monterey County.



Bertie Bialek Elliott and her daughters Cynthia Livermore, Carolyn Akcan, and Susan Lansbury

TOTAL DONORS IN 2017		3,071
LEGACY SOCIETY MEMBERS, WHO DONATE THROUGH PLANNED GIVING/BEQUESTS		104
NEW 2017 DONORS AT PARTNERS IN CARING LEVEL, \$50,000 OR ABOVE		7
REPEAT DONORS (SINCE 1982)		19,455
DONORS FOR 10 YEARS OR MORE		3,383



ASPIRE HEALTH PLAN

In collaboration with



As the only locally owned and operated health plan, Aspire Health Plan's purpose is to improve benefit coverage and access to care for the Monterey County communities it serves. The focus is on comprehensive coverage, assistance, and coordination of care wherever needed, and ensuring members receive the best value for their health plan dollar.

aspirehealthplan.org

EMPLOYEES | 45

CONTRACTED/PARTNER STAFF | 150

MEDICARE ADVANTAGE MEMBERS | 3,300

COMMERCIAL HEALTH PLAN MEMBERS | 37,500

2017 HIGHLIGHTS

- Medicare Advantage plans have doubled in enrollment to about 3,300 members — many are sharing their good experiences
- Aspire's claims administration company, Coastal TPA, now serves more than 37,000 people covered by employer-sponsored, self-funded health plans
- Aspire's new member relations team was formed in 2017 and conducts regular communications and special program offerings for Medicare Advantage members, helping them access resources to live more healthy, active lives



Ellen Gannon, Aspire Health Plan member



Community Health Innovations

Community Health Innovations is wellness integration at its best, bringing together patients, healthcare providers, community resources, and local and national partners — all along the continuum of care. It's called integrated population management. What it means to us is linking all parts of the healthcare system to provide the right care and optimal patient experience at the lowest cost.

communityhealthinnovations.org

37 | EMPLOYEES

PATIENTS REACHED

2,768 | AFTER DISCHARGE FROM HOSPITAL

1,680 | COMPLEX MEDICAL CONDITIONS

1,129 | SCREENED AT WELLNESS FAIRS

844 | ENROLLED IN HEALTH COACHING

135 | REPEAT EMERGENCY DEPARTMENT VISITORS WITH COMPLEX NEEDS

2017 HIGHLIGHT

Montage Health and Salinas Valley Memorial Healthcare System (SVMHS) partnered and made a significant population health investment in Monterey County by jointly owning CHI, Aspire, and Coastal. In 2017, we had our first full year with both Montage Health and SVMHS leadership providing direction and input on CHI's strategic initiatives and goals. Leadership teams from both organizations are collaborating to ensure that patients receive optimal services to benefit their health and well-being, a momentous accomplishment for our community.



Emma



With locations in Marina and Salinas, Montage Wellness Center keeps our communities healthy and active, offering expansive fitness equipment, warm-water therapy and lap pools, group exercise classes, and customized personal training by certified professionals. Additionally, the hospital's adjacent medically supervised rehabilitation and wellness programs help individuals recover from chronic illnesses and injuries.

montagewellnesscenter.com

MARINA MEMBERS | 2,840

SALINAS MEMBERS | 1,041

EMPLOYEES | 62

SQUARE FEET OF CENTERS | 43,662

2017 HIGHLIGHT

We ended our second operational year at our center in Salinas with more than 1,000 members.

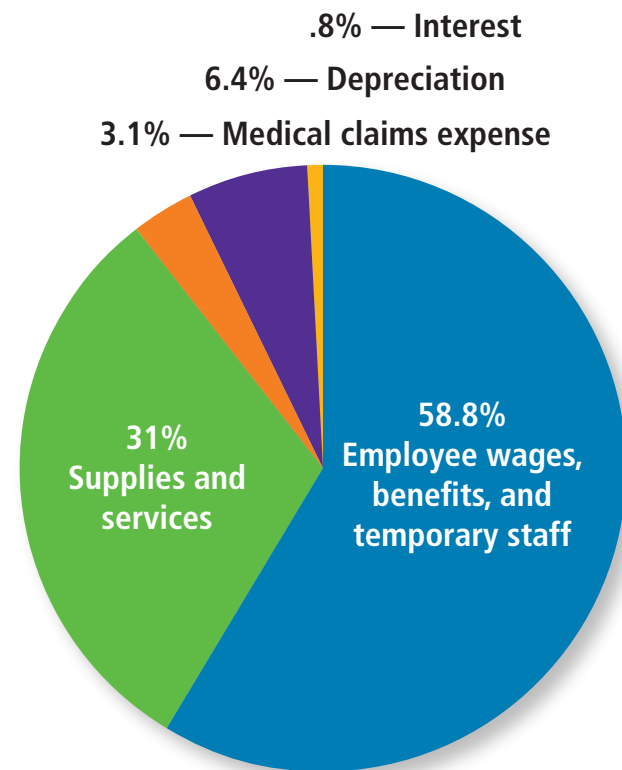




FINANCIALS

Montage Health 2017 FISCAL YEAR

OPERATING EXPENSES



STATEMENT OF CONSOLIDATED OPERATIONS

We billed patients for:

Inpatient general care	\$ 397,765,000
Inpatient allied services	720,368,000
Outpatient allied and professional services	623,595,000

We also received revenue from:

Donations and investment earnings	23,260,000
Health plan activities	23,412,000
Community Health Innovations	4,159,000
Montage Wellness Center	3,099,000
Other business activities	19,744,000

Total gross revenue **1,815,402,000**

However...

Government and commercial insurance failed to pay	1,149,832,000
Administrative adjustments	20,659,000
Patients failed to pay (bad debt)	9,335,000
Charity care provided	12,164,000

Total we did not collect **1,191,990,000**

Total net operating revenue **623,412,000**

We had operating expenses for:

Employee wages, benefits, and temporary staff	328,477,000
Supplies and services	173,018,000
Medical claims	17,095,000
Depreciation	35,899,000
Interest	4,535,000

Total operating expenses **559,024,000**

Amount retained for improvement of services and facilities **\$64,388,000**

BALANCE SHEET

ASSETS

Current	Cash and equivalents	\$ 79,864,000
	Net accounts receivable	87,358,000
	Other current assets	57,303,000
	Total	224,525,000

Limited as to use	For capital replacement and expansion	520,168,000
	Donor restricted	297,576,000
	Other	914,000
	Total	818,658,000

Other	Other investments and receivables	34,540,000
	Other long-term assets	8,954,000
	Net property, plant, and equipment	399,790,000
	Total	443,284,000
	TOTAL ASSETS	1,486,467,000

LIABILITIES

Current	Line of credit	0
	Accounts payable	30,195,000
	Other current liabilities	96,796,000
	Total	126,991,000

Long-term	Long-term debt	167,680,000
	Pension benefit obligation	133,792,000
	Post-retirement health obligation	36,002,000
	Other long-term liabilities	28,685,000
	Total	366,159,000
	TOTAL LIABILITIES	493,150,000

NET ASSETS	Unrestricted	694,421,000
	Temporarily restricted	219,361,000
	Permanently restricted	79,535,000
	TOTAL NET ASSETS	993,317,000

Total liabilities and net assets **\$1,486,467,000**



COMMUNITY BENEFIT



Debi Cassan and her therapy dogs Holly and Hastings

Community Benefit FUNDS AND VOLUNTEER HOURS

Every year, we put millions of dollars and thousands of hours back into the community to meet healthcare needs and support local organizations. In 2017, we spent more than \$165 million and devoted 16,603 volunteer hours under the hospital's Community Benefit program. We filled in the financial gaps for the care provided that isn't fully covered by insurance or government programs and for patients who have few or no resources.

To see all the details of our Community Benefit Program, go to chomp.org/communitybenefit

IMPROVING ACCESS TO CARE

Charity care, recruitment of community doctors, covering costs not paid by Medicare and other government programs, etc.

HEALTH EDUCATION AND WELLNESS

Health fairs, family and patient education and counseling, scholarships, etc.

BUILDING HEALTHY COMMUNITIES

Supporting community events, donating supplies to organizations in need, etc.

SPECIAL CARE FOR SPECIAL NEEDS

Mental health information and referrals, chemical dependency assessments, bereavement programs, etc.

TOTAL

FUNDS	\$160,889,393	\$2,770,230	\$1,487,773	\$527,638	\$165,675,034
VOLUNTEER HOURS	4,241	2,429	7,652	2,281	16,603

Community Benefit PARTNERS AND RECIPIENTS

Community Hospital worked with the following organizations in 2017 to improve the health of the community as part of its Community Benefit program.

BUSINESS ORGANIZATIONS

AT&T Pebble Beach National Pro-Am Tournament
Bojuka Ryu School of Martial Arts
Chamisal Tennis & Fitness Club
Club at Crazy Horse Ranch, The
Del Monte Shopping Center
Digital First Media News Service
Hahn Family Wines
KION TV
KSBW TV
Lucky Supermarket
Lyon Software, Inc.
Meadowbrook Swim and Tennis Club
Monterey Bay Kayaks
Monterey County Herald
Monterey Jet Center
Monterey Peninsula Country Club

Nicklaus Club — Monterey
Pacific Gas & Electric Company
Pacific Meadows Senior Housing, L.P.
Pilates Monterey
Professional Research Consultants, Inc.
Pure Insurance
Quail and Olive
Red Rose Preparedness, Risk and Crisis Management, LLC
Rumina Nursingwear
Santa Lucia Preserve
Steinbeck House Restaurant
Tanimura & Antle
Tribune Content Agency
Twin Creeks Golf Course

Church of the Good Shepherd
Ciclovía Salinas
Community Church of the Monterey Peninsula
Community Emergency Response Team
Community Homeless Solutions
Community Partnership for Youth
Community Reuse Network
Compass Church
Covenant Presbyterian Church
Deaf and Hard of Hearing Service Center
El Estero Presbyterian Church
Elk's Lodge, Monterey
Everyone's Harvest
First 5 of Monterey County
First Baptist Church
First Presbyterian Church
First United Methodist Church
Gateway Center of Monterey County, Inc.
Gathering for Women
Girl Scouts, Monterey Bay Chapter
Girls Inc.
Greater Victory Temple
Habitat for Humanity
Hartnell Little League
Hospice Giving Foundation
Interim, Incorporated
ITN Monterey County
Jr. Giants Marina
Kernes Adaptive Aquatics

Kid's Korner
Kinship Center
Lutheran Church of Our Savior
Lutheran Church of the Good Shepherd
Marina Tree and Garden Club
Meals on Wheels of the Monterey Peninsula
Monterey Bay Economic Partnership
Monterey Bay Swim Club
Monterey Bay Village
Monterey Bridge Center
Monterey County Agricultural Education, Inc.
Monterey County Diabetes Initiative
Monterey County Domestic Violence Council
Monterey Jazz Festival
Monterey Peninsula Foundation
Monterey Peninsula Yacht Club
Monterey Rape Crisis Center
Mount Nebo Missionary Church
MY Museum
National Steinbeck Center
Northminster Presbyterian Church, Salinas
Pajaro Dunes North Association
Pebble Beach Zombie Race and Emergency Preparedness Fair
Rancho Cielo Youth Campus
Salinas Women's Crisis Center
Salvation Army Monterey Peninsula Corps
Second Harvest Food Bank
Shoreline Community Church

COMMUNITY GROUPS AND NON-PROFIT ORGANIZATIONS

AIM for Mental Health
Amateur Radio Group of Monterey
Aromas Grange
Bethlehem Lutheran Church
Big Sur International Marathon
Big Sur Land Trust
Blind and Visually Impaired Center
Boulevard Bombs Foundation
Boys & Girls Clubs of Monterey County

Buddhist Temple of Salinas
California Product Stewardship Council
Calvary Baptist Church
Carmel Foundation, The
Carmel Valley Kiwanis Club
Carmel Valley Manor
Central Coast Quality of Life Project, Monterey
Child Abuse Prevention Council of Monterey County

SIR (Sons in Retirement)
 Soroptimist International of Carmel Bay
 SPCA of Monterey County
 St. Joseph's Church
 St. Jude's Church and Shrine
 Twin Lakes Church
 Unitarian Universalist Church of Monterey

United Way of Monterey County
 YMCA of the Monterey Peninsula
 YMCA, Salinas Community
 YMCA, San Benito County & Watsonville Family
 YMCA, South Monterey County
 YMCA, Watsonville Family

EDUCATIONAL ORGANIZATIONS

A.T. Still University
 Alisal Union School District
 All Saints' Day School
 Aromas-San Juan Unified School District
 Big Sur Charter School
 Brandman University
 Cabrillo Community College
 California State University, Fresno
 California State University, Monterey Bay
 Carmel Unified School District
 Central Coast College
 Chartwell School & The New High School Project
 Defense Language Institute
 Greenfield Unified School District
 Head Start, Salinas - Monterey County Office
 of Education
 HealthImpact
 International School of Monterey
 King City Unified School District
 Lagunita Elementary School District
 Middlebury Institute of International Studies
 Monterey Bay Aquarium Research Institute
 Monterey County Office of Education
 Monterey Peninsula College
 Monterey Peninsula Unified School District
 Mount St. Mary's University
 Naval Postgraduate School

Naval Postgraduate School Foundation
 North Monterey County Unified School District
 Notre Dame High School
 Pacific Grove Unified School District
 Pajaro Valley Unified School District
 Palma High School
 Salinas City Elementary School District
 Salinas Union High School District
 Samuel Merritt University
 San Antonio Union School District
 San Ardo Union Elementary School District
 San Carlos School, Monterey
 San Jose State University
 San Lucas Union Elementary School District
 Santa Catalina High School
 Santa Rita Union School District
 Soledad Unified School District
 Spreckels Union School District
 Stevenson School
 University of California, San Francisco
 University of the Pacific
 Washington Union School District
 Western University of Health Sciences
 Western Washington University
 York School

HEALTH-RELATED ORGANIZATIONS

Access Support Network
 ALS Association
 Alzheimer's Association
 American Bone Health
 American Cancer Society
 American Heart Association
 American Medical Response
 American Red Cross
 Arthritis Foundation
 AstraZeneca Pharmaceuticals
 Balance Physical Therapy
 Big Sur Health Center
 Birth Network of Monterey County
 Breast Cancer Assistance Group of
 Monterey County
 Central Coast Quality of Life Programs
 Central Coast Visiting Nurses Association
 & Hospice
 Coastal Kids Home Care
 Dientes Community Dental Care
 Doctors on Duty
 Dominican Hospital, Santa Cruz
 Donor Network West
 Elderday Adult Day Health Care
 Eli Lilly and Company
 Exelixis Corporation
 Florida Hospital Association
 Healthcare Foundation of Northern
 and Central California
 Healthy Mothers, Healthy Babies
 Hospital Council of Northern and
 Central California
 INSYS Therapeutics
 Janssen Biotech, Inc.
 Leukemia and Lymphoma Society
 Medshare International

Merck & Co., Inc.
 Monterey Bay Sleep Center
 Monterey Peninsula Dental Group
 Monterey Peninsula Pediatric Medical Group
 Monterey Prescribe Safe
 Monterey Spine and Joint Center
 Myriad Genetics, Inc.
 Natividad Medical Center
 Natividad Medical Foundation
 Novacure Corporation
 Novartis Pharmaceuticals AG
 Pacific Grove Convalescent Hospital
 Palo Alto Medical Foundation
 Park Lane Senior Residence
 PRIMA Heart
 Puerto Rico Hospital Association
 Pulmonary Associates of the
 Monterey Peninsula, Inc.
 Rite Aid Pharmacy
 Rotacare Bay Area Inc.
 Salinas Dialysis Center
 Salinas Valley Memorial Healthcare System
 Soledad Community Healthcare
 St. Louise Regional Hospital
 Sun Street Center
 Sunrise Care Center
 Takeda Pharmaceuticals
 Teva Pharmaceuticals
 Vantage Eye Center
 Vantage Surgery Center
 Walgreen's
 Watsonville Community Hospital

PUBLIC AGENCIES

Association of Monterey Bay Area Governments (AMBAG)
Cal Fire – California Department of Forestry & Fire Protection
California Department of Fish and Game
California Highway Patrol
California Office of Emergency Services
Carmel Highlands Fire Ambulance Authority
Carmel Highlands Fire Protection District
Castroville Water District
City of Monterey
City of Pacific Grove
City of Seaside
Cypress Fire Protection District
King City
Marina Department of Public Safety
Marina PAL
Monterey Bay Unified Air Pollution Control District
Monterey County Child Support Services
Monterey County Department of Health
Monterey County Department of Health-Clinic Services Bureau
Monterey County Department of Housing
Monterey County Free Libraries
Monterey County Juvenile Hall
Monterey County Office of Emergency Communication 911
Monterey County Office of Emergency Services
Monterey County Probation Department
Monterey County WIC Program
Monterey Peninsula Regional Park District
Monterey Police and Fire Departments
Monterey Regional Airport
Monterey Regional Waste Management District
Monterey-Salinas Transit
NSA Monterey Office of Emergency Management
Presidio of Monterey Fire Department and Emergency Management
Prunedale Senior Center
Salinas Municipal Pool
Salinas Police Department
Salinas Sports Complex and Rodeo Sand City
Santa Cruz Metropolitan Transit District
Seaside Police and Fire Departments
Soledad Mission Recreation District
Solid Waste Authority
U.S. Forest Service Monterey Ranger District



Kids Eat Right



YOUR GIFTS AT WORK

At Montage Health Foundation, we believe in the power of philanthropy to improve and sustain the health of our entire community. Your gifts enable us to do that by supporting vital initiatives like these.

COMMUNITY HEALTH

Your gifts support a wide range of community health initiatives, including wellness coaching for kids at risk of developing diabetes, a mobile clinic to provide healthcare for the homeless, recruitment of doctors and specialists, and efforts to reduce opioid use and abuse. Contributions also pay for care and services for those who can't afford them, through our Sponsored Care program.



Mobile Clinic staff and volunteers



PROPOSED WOMEN'S HEALTH CENTER

Women historically put others first when it comes to healthcare. With your help, we envision development of a center just for women, bringing together the range of services they need, in one convenient, coordinated setting. The center would offer services for women of all ages and circumstances, from adolescence to child-bearing years to menopause to end of life. Services could include navigation for all stages of women's health and wellness, breast screening and diagnostics, pre- and post-natal support, bone health, hormone therapy, and education and support groups.

OHANA: MENTAL HEALTHCARE FOR CHILDREN AND TEENS

Thanks to a major gift of \$105.8 million from Bertie Bialek Elliott, we are developing a groundbreaking effort called Ohana to transform mental healthcare for our children and adolescents. The unprecedented venture will include everything from an actual “Ohana House” to early intervention, comprehensive support for young people and their families, and partnerships with an extensive collection of community organizations.





GENERAL NEEDS

Though we are raising funds for specific projects and services, there are countless other areas of need. We support those through an “unrestricted fund,” which gives us the flexibility to put your dollars where they are needed most. This ranges from a major renovation of our electrophysiology lab, where patients with irregular heartbeats are treated, to helping people prepare advance healthcare plans. It also helps us be prepared for urgent, unexpected needs that inevitably arise.

[Learn more at montagehealthfoundation.org](https://montagehealthfoundation.org)

 Printed on recycled paper



P.O. Box HH, Monterey, CA 93942 | (831) 624-5311 | montagehealth.org